



Beaufort County Public Works
Stormwater Infrastructure
Project Summary

Project Summary: Braeburn Lane

Activity: Routine/Preventive Maintenance

Duration: 10/02/18-11/07/18

Narrative Description of Project:

Project improved 2,793 L.F. of drainage system. Bush hogged 2,029 L.F. of channel. Cleaned out 664 L.F. of channel and 100 LF of roadside ditch.

2019-523 / Braeburn Lane

	Labor Hours	Labor Cost	Equipment Cost	Material Cost	Contractor Cost	Indirect Labor	Total Cost
AUDIT / Audit Project	1.0	\$21.79	\$0.00	\$0.00	\$0.00	\$0.00	\$21.79
BW / Bobcat Work	26.0	\$512.66	\$99.60	\$55.20	\$0.00	\$195.36	\$862.82
CCO / Channel - cleaned out	20.0	\$397.20	\$177.12	\$52.00	\$0.00	\$244.20	\$870.52
CBH / Channel- bushhogged	12.0	\$474.30	\$65.44	\$38.25	\$0.00	\$173.34	\$751.33
HAUL / Hauling	31.0	\$623.37	\$410.64	\$122.29	\$0.00	\$82.10	\$1,238.40
RSDCL / Roadside Ditch - Cleanout	3.0	\$59.58	\$35.88	\$0.00	\$0.00	\$36.63	\$132.09
UTLOC / Utility locates	1.0	\$24.70	\$0.00	\$0.00	\$0.00	\$13.23	\$37.93
2019-523 / Braeburn Lane Sub Total	94.0	\$2,113.60	\$788.68	\$267.74	\$0.00	\$744.86	\$3,914.88
Grand Total	94.0	\$2,113.60	\$788.68	\$267.74	\$0.00	\$744.86	\$3,914.88

(Before)



(During)

(No Picture Available)

(After)



Project: Braeburn Lane Map #1

Activity: Routine/ Preventive Maintenance

Project #: 2019-523

Township/SW Dist: Lady's Island/7

Completed: November 2018



Legend	
Drainage Type	
	Access Pipe
	Bleeder Pipe
	Channel Pipe
	Channel
	Stream
	Crossline Pipe
	Driveway Pipe
	Lateral
	Lateral Pipe
	River
	Road Pipe
	Roadside
	Roadside Pipe



1 inch = 210 feet

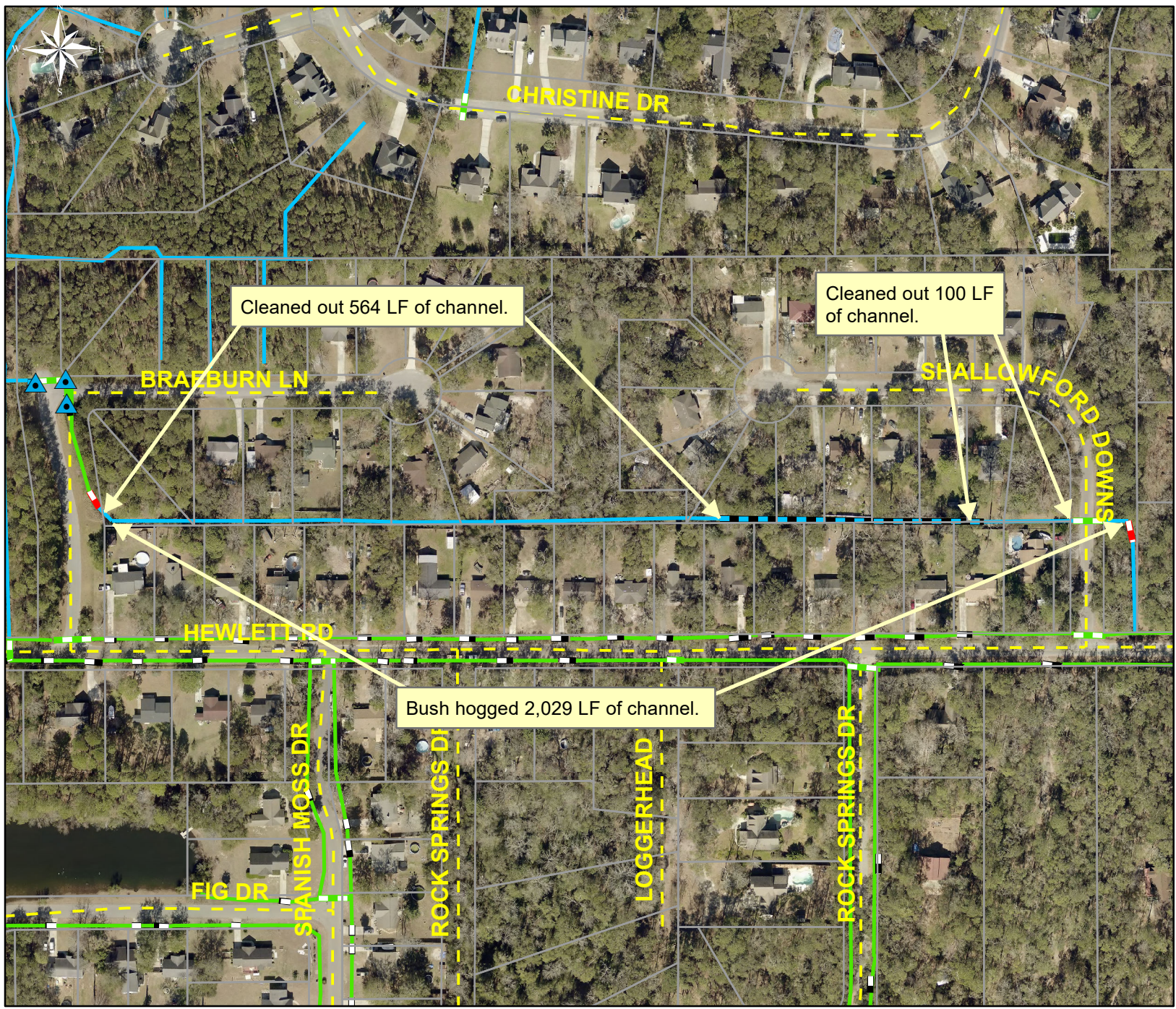
Project: Braeburn Lane Map #2

Activity: Routine/ Preventive Maintenance

Project #: 2019-523

Township/SW Dist: Lady's Island/7

Completed: November 2018



Legend	
Drainage Type	
	Access Pipe
	Bleeder Pipe
	Channel Pipe
	Channel
	Stream
	Crossline Pipe
	Driveway Pipe
	Lateral
	Lateral Pipe
	River
	Road Pipe
	Roadside
	Roadside Pipe



1 inch = 210 feet